



Standalone DJ Sampler
DJS-1000

Firmware Version 1.10

Operating Instructions Addendum

Before Start

The Operating Instructions for the DJS-1000 was written based on firmware version 1.10.

This document describes added features when firmware version 1.10 were released.

Here is a list of additions for firmware version 1.10:

- Multi Track Adjustment
- File sharing via Network*

*To use file sharing feature, please update the firmware to version 1.10 or later. You'll also need DJS-TSP Project Creator version 1.1.0 or later for this feature.

Multi Track Adjustment

You can adjust parameters (VOLUME, PITCH, etc.) of multiple tracks at the same time.

How to use



1 To select multiple tracks, keep holding down [SHIFT] button and operate the unit.



Example of the HOME screen

2 Touch the tracks you want to adjust parameters at the same time.

3 Turn the parameter adjustment knobs to adjust parameters.

The following parameters can be adjusted in each screen.

HOME screen	VOLUME, PITCH
SEQUENCE screen	VOLUME, PITCH
TRACK SETTING screen	CHOKE, COLOR, INSTRUMENT
MIXER screen	VOLUME, PITCH

File Sharing

File Sharing via Network

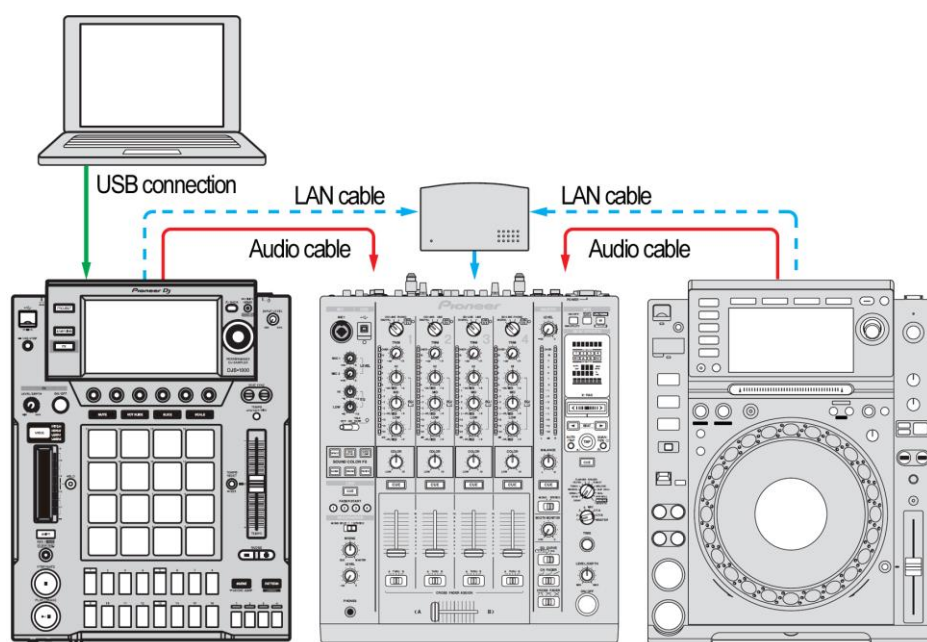
Connect DJS-1000 and DJS-TSP Project Creator via Network to share projects in DJS-TSP Project Creator. You can also share samples of a selected folder.

Equipment to set up File Sharing

- DJS-1000 with firmware version 1.10 or later
- Computer where DJS-TSP Project Creator* is installed (*version 1.1.0 or later)
- LAN cables and a switching hub (to connect multiple equipment)
- USB cable
- Audio cables

Connection diagram

To set up File Sharing function, connect your computer and DJS-1000 (USB-B terminal on the rear panel) as the figure below using a USB cable. To connect multiple equipment connect using LAN cables.



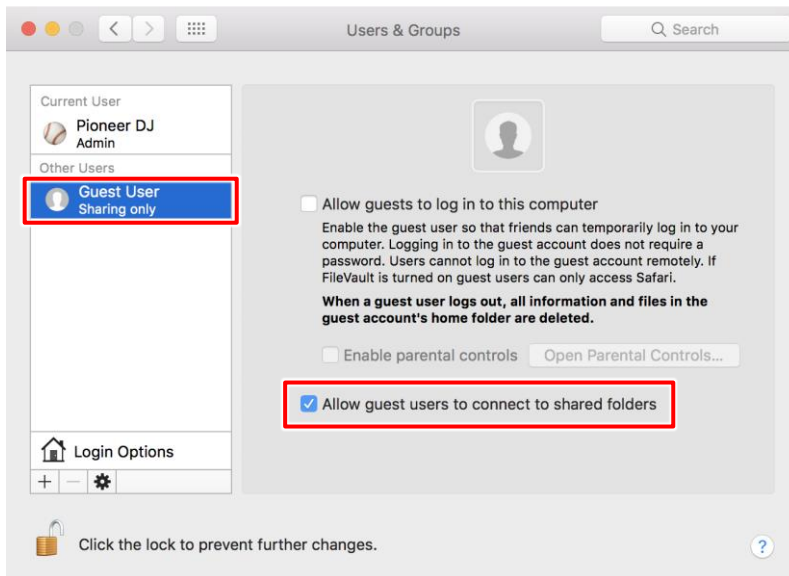
Connection diagram for a computer and DJS-1000s

Network settings

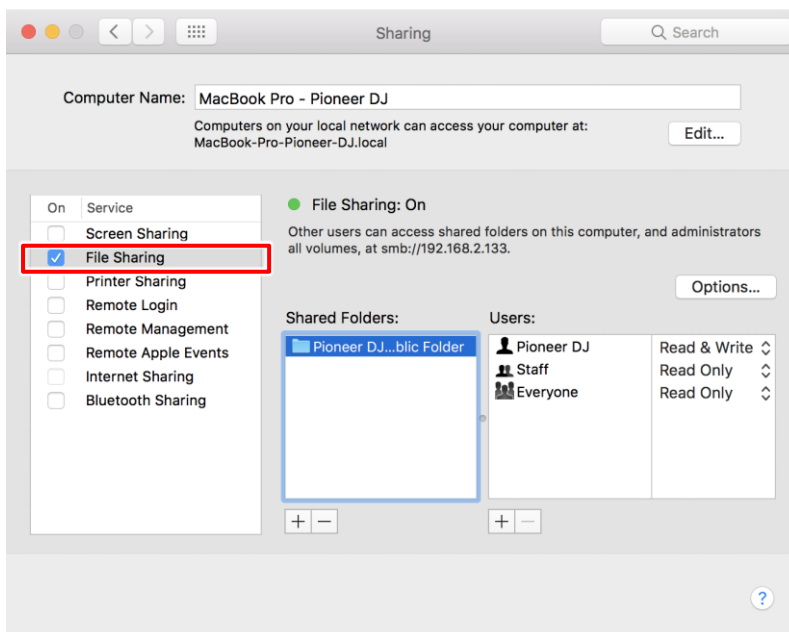
To use File Sharing feature, please check the following network settings.

<macOS>

1. Open [System Preferences] > [Users & Groups] and enable [Allow guests to connect to shared folders].



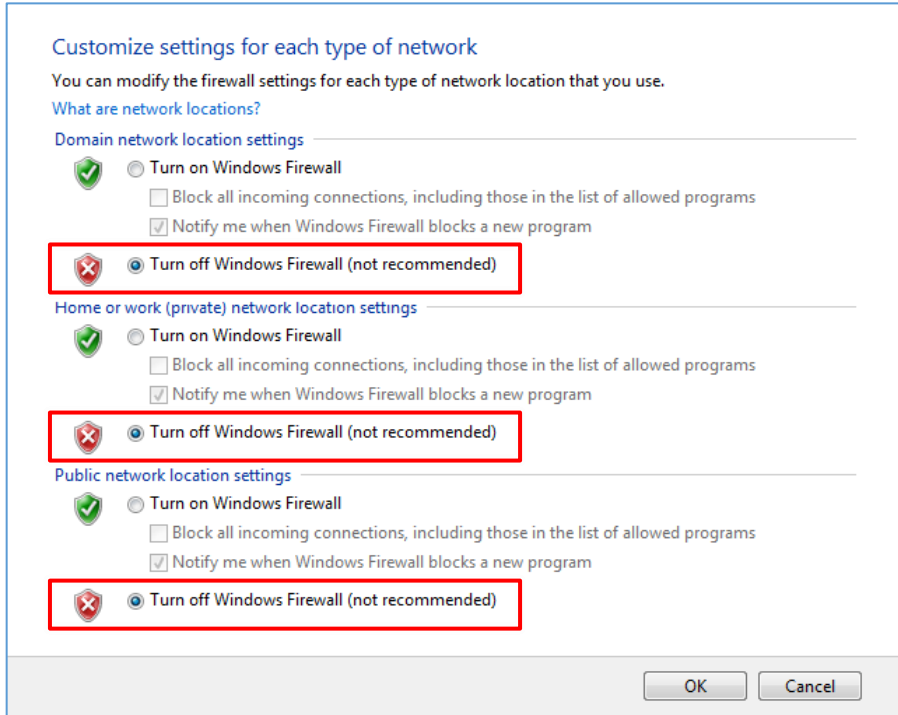
2. Open [System Preferences] > [Sharing] and enable [File Sharing].



<Windows>

1. You need to change [Windows Firewall] setting in Control Panel.

Go to [Turn Windows Firewall on or off] and select [Turn off Windows Firewall].

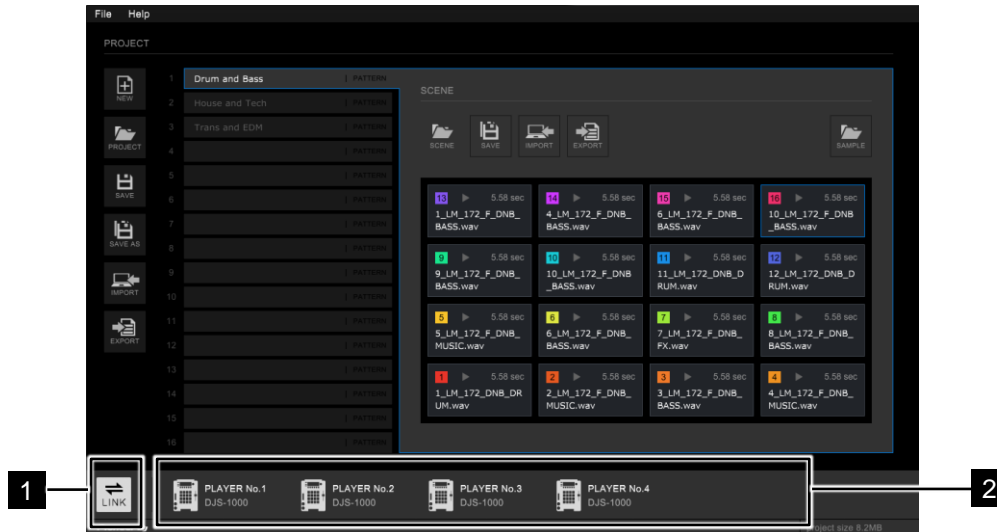


Disabling the firewall can cause security problems. Please do not connect to other networks while using DJS-TSP Project Creator. You can also allow DJS-TSP Project Creator to communicate through Windows Firewall. Please refer to the Windows Help for details.

Connection procedures

Connection procedures (DJS-TSP Project Creator)

Use File Sharing features shown on the bottom of DJS-TSP Project Creator.

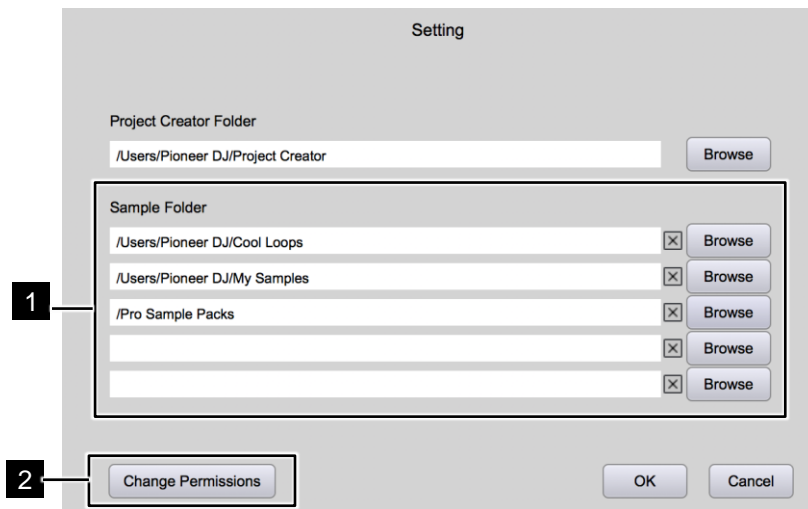


1 LINK button: Start/stop network connection

2 Player's connection status is shown in the PLAYER indicator.

Sample folder setting (DJS-TSP Project Creator)

Up to 5 locations for sample folders can be set to save sample files to share them in the network configuration. (You cannot change settings when they are connected.)

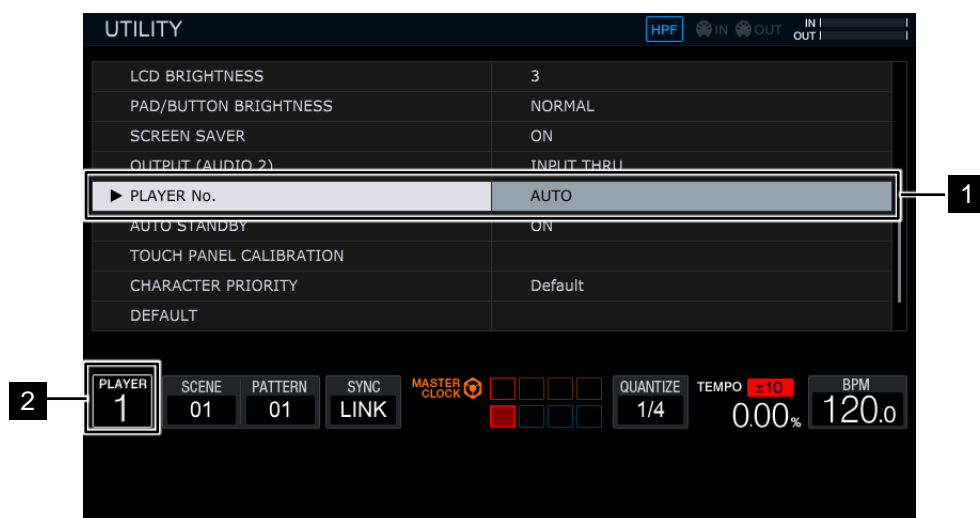


1 The full path to the folder is displayed in the Sample Folder field.

1. Select the application menu and click [File] → [Setting] to open Setting dialog.
2. Click the [BROWSE] button to open Sample Folder dialog to select a folder.
3. Click [X] in Sample Folder field to clear the set folder.

2 When [Permission Denied] is displayed on the DJS-1000 and file sharing is disabled, click [Change Permissions] to modify permissions of files and enable file sharing.

Connection procedure (DJS-1000)



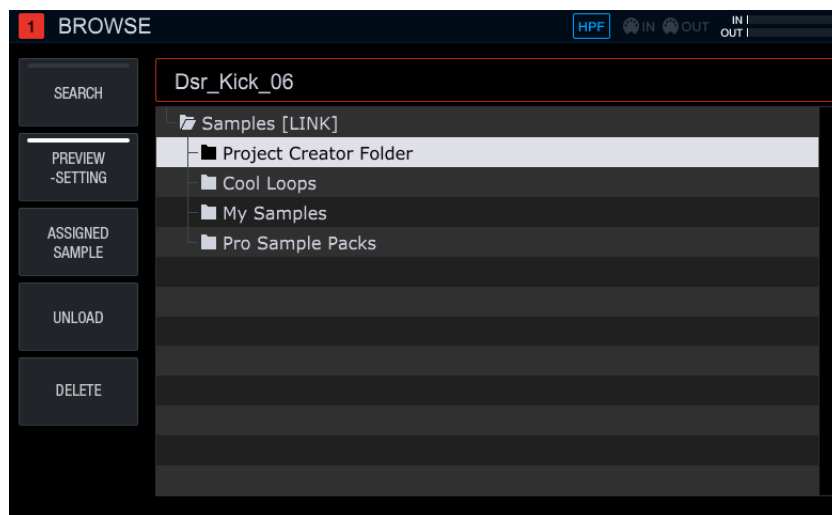
1 Select [AUTO] for [Player No.] on the UTILITY screen. (default setting)

2 Player No. indicator is lit when connected to Network.

Share sample folders (DJS-1000)

Projects and samples stored in a computer connected via network can be used on the DJS-1000.

When this feature is enabled, [LINK] is shown on the screen for each function.



Similarly, the following functions can be used when connected via network.

PROJECT	Open, Save, Render Audio
SAMPLE	Load, Preview